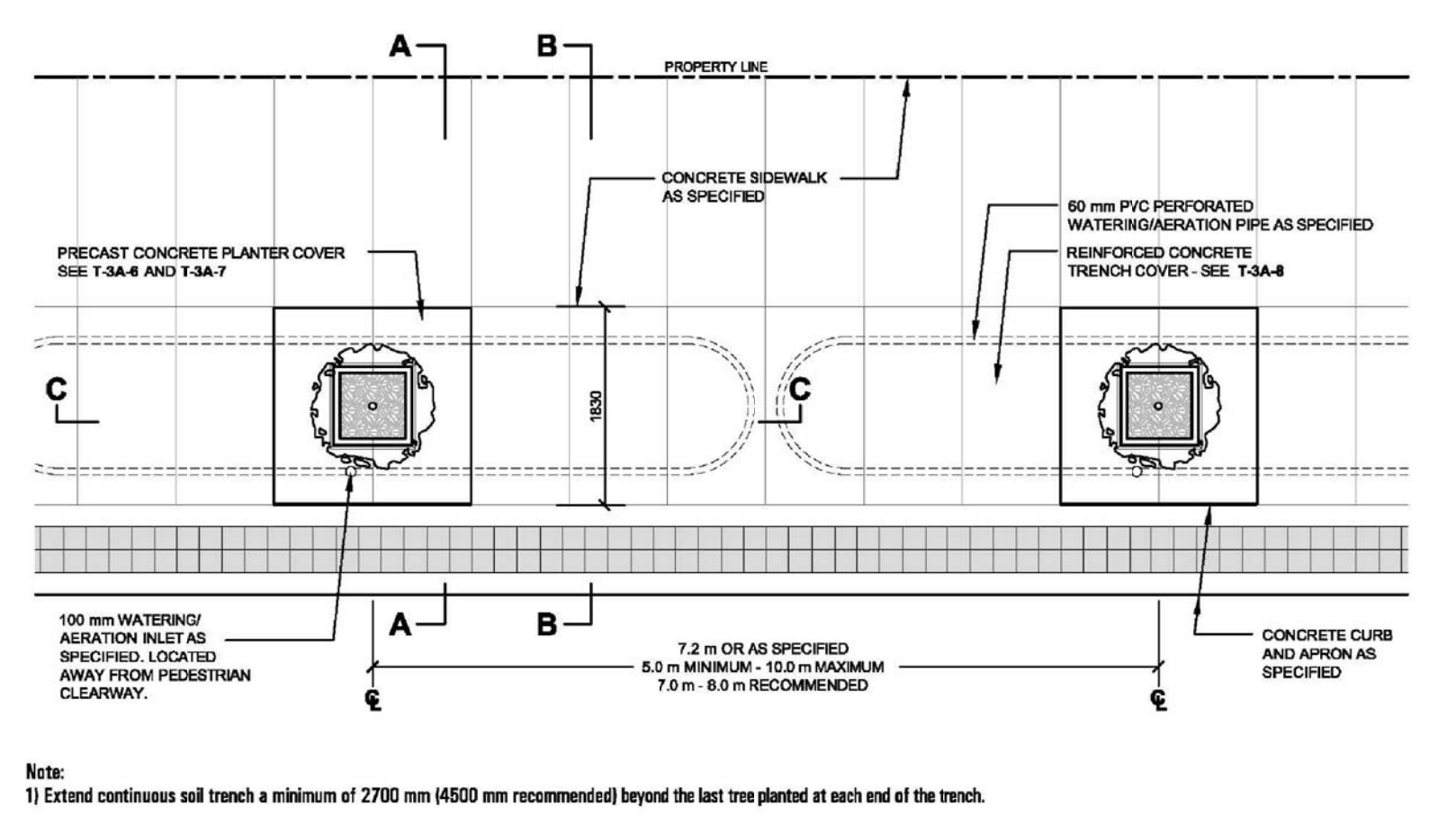


**Design Application for T-3A:**  
 Continuous Trench: 1500 mm wide  
 Cast-in-place: width varies (15 mm typical, 400 mm minimum)  
 Polymer Concrete: width varies (2100 mm preferred maximum, 1500 mm minimum)  
 Sidewalk: perforated concrete 4.5 m wide (2100 mm minimum)  
 Minimum 4.2 m wide (1500 mm minimum)

Note: When concrete paving is required by minimum 400 mm wide curb, sidewalk width shall be 4.5 m preferred minimum and 3.8 m treatment. Sidewalk conditions may vary. Round minimum widths to City approval.

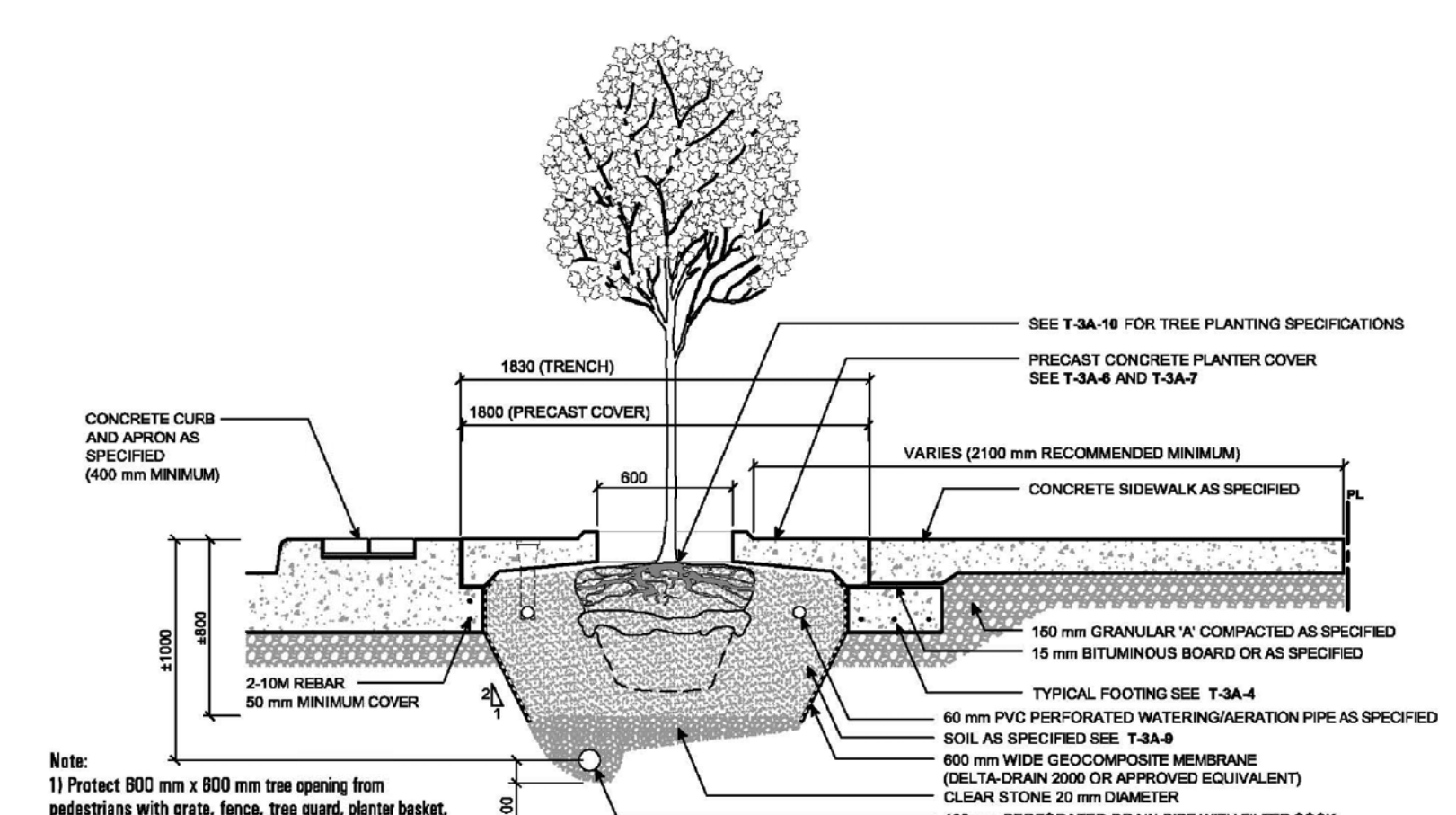
Toronto Urban Design  
 Streetscape Manual  
 Continuous Soil Trench: Precast Concrete Planter Cover and Concrete Sidewalk  
 Section CC  
 T-3A-1  
 NTS  
 02/15

1 PRECAST CONCRETE PLANTER COVER  
 SPL-4 CITY OF TORONTO DETAIL NTS



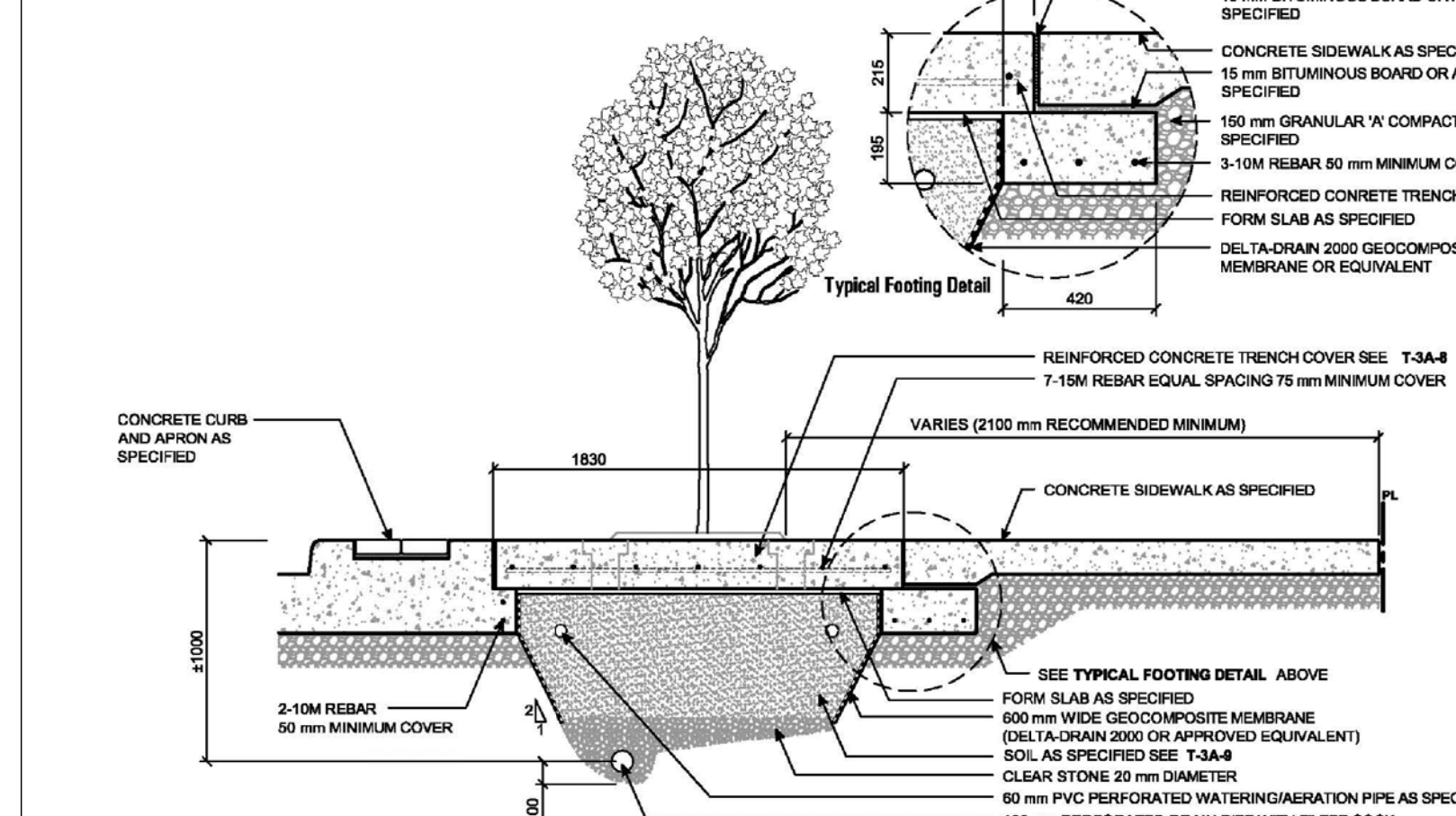
Toronto Urban Design  
 Streetscape Manual  
 Continuous Soil Trench: Precast Concrete Planter Cover and Concrete Sidewalk  
 Plan View  
 T-3A-2  
 NTS  
 02/15

2 PRECAST CONCRETE PLANTER COVER  
 SPL-4 CITY OF TORONTO DETAIL NTS



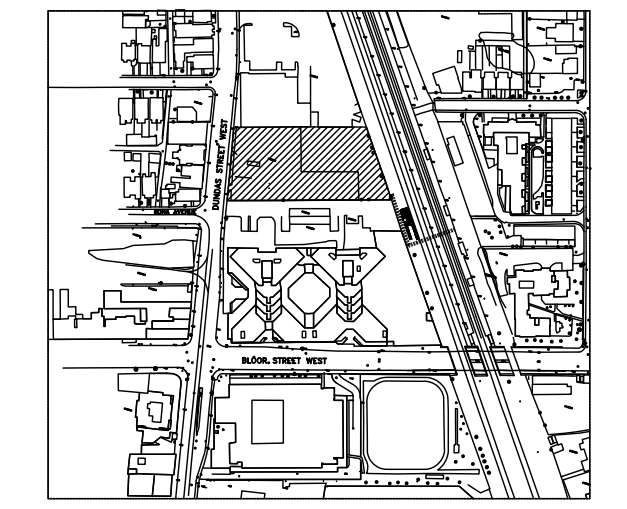
Toronto Urban Design  
 Streetscape Manual  
 Continuous Soil Trench: Precast Concrete Planter Cover and Concrete Sidewalk  
 Section AA  
 T-3A-3  
 NTS  
 02/15

3 PRECAST CONCRETE PLANTER COVER  
 SPL-4 CITY OF TORONTO DETAIL NTS



Toronto Urban Design  
 Streetscape Manual  
 Continuous Soil Trench: Precast Concrete Planter Cover and Concrete Sidewalk  
 Section BB  
 T-3A-4  
 NTS  
 02/15

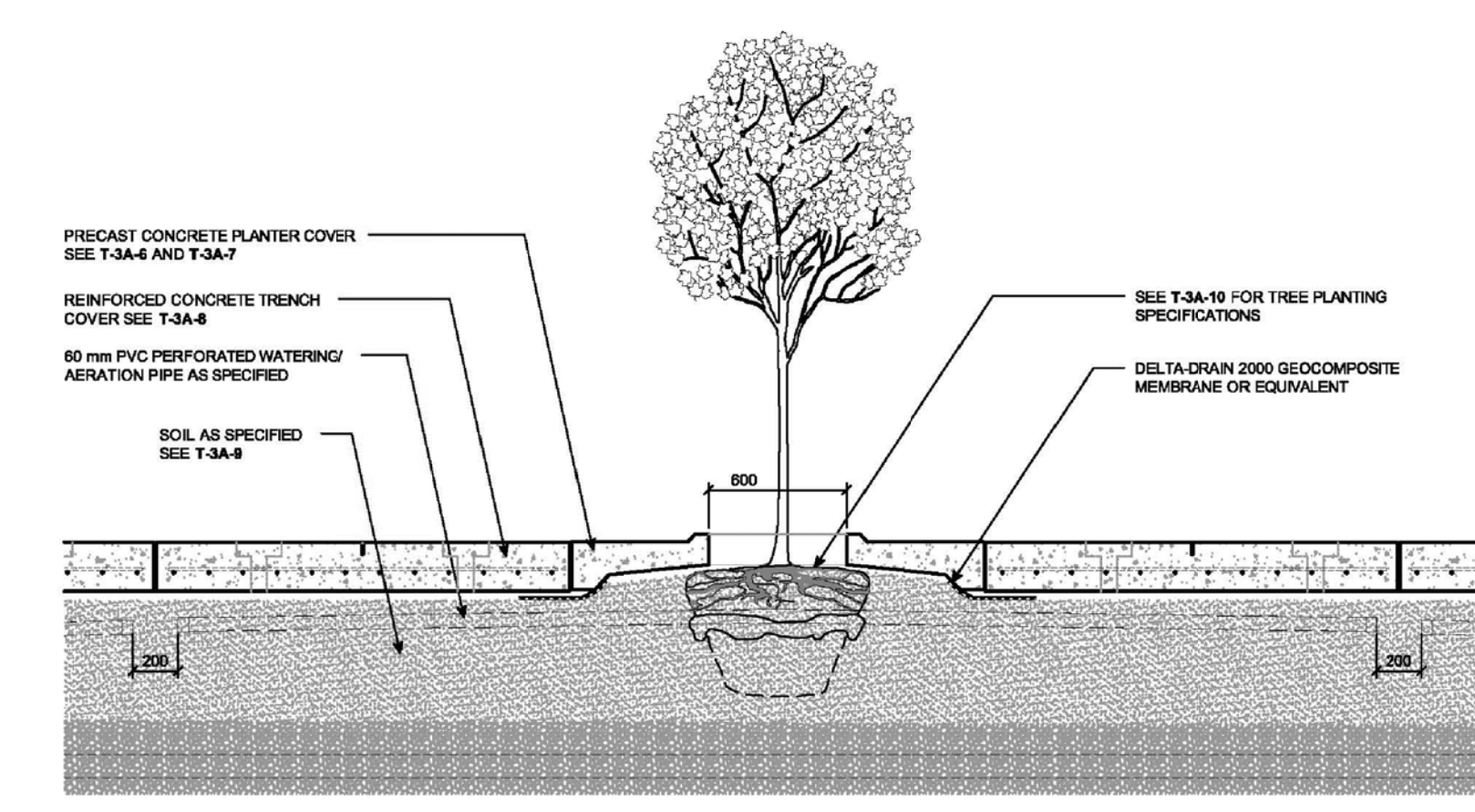
4 PRECAST CONCRETE PLANTER COVER  
 SPL-4 CITY OF TORONTO DETAIL NTS



KEY PLAN n.t.s.

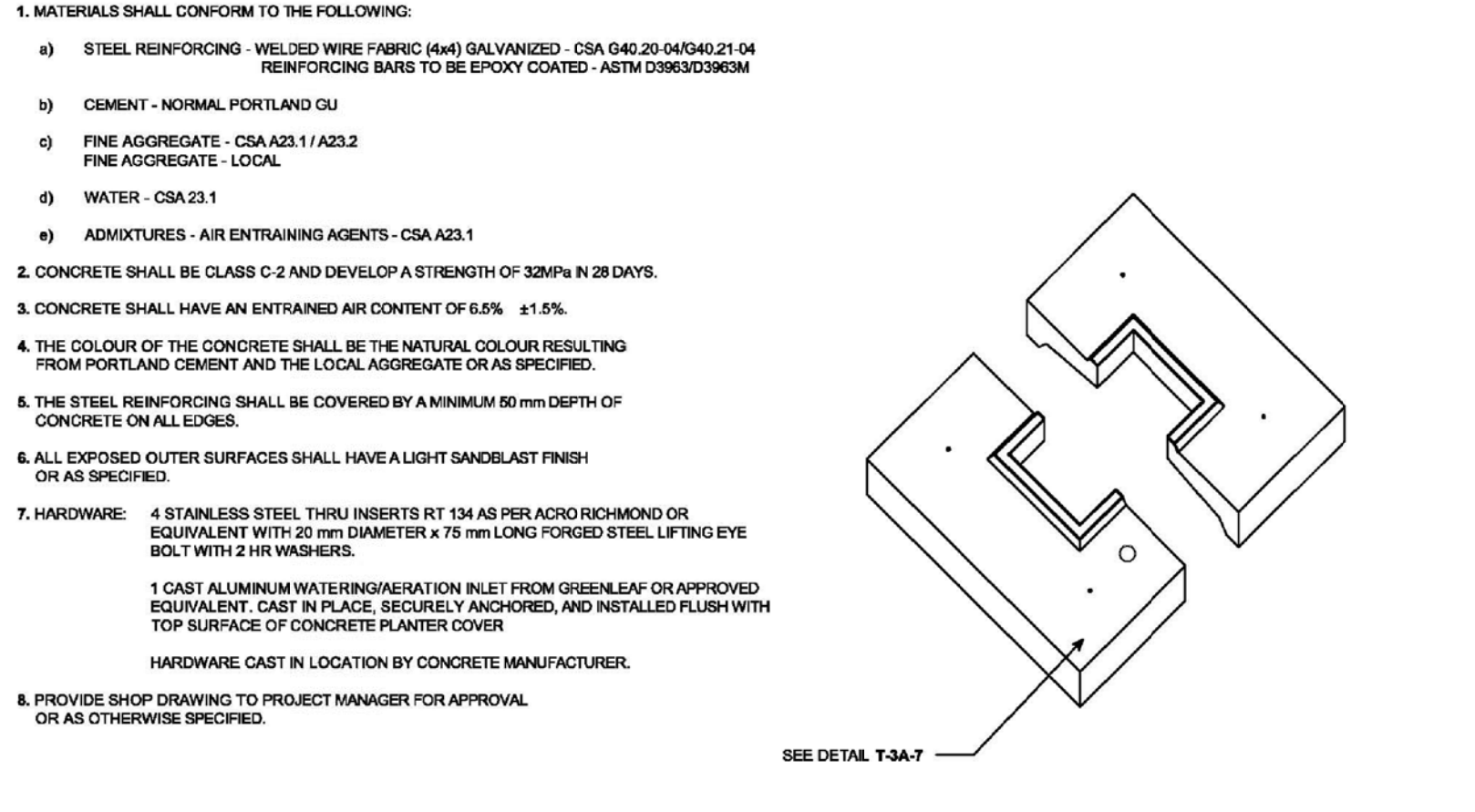
- NOTES
- Do not scale the drawings.
  - The contractor shall check and verify all dimensions and conditions on the project and immediately report any discrepancies to the consultant before proceeding with the work.
  - The contractor is to be aware of all existing and proposed services and utilities. The contractor shall have all underground services and utility lines staked by each agency having jurisdiction prior to commencing work.

LEGEND



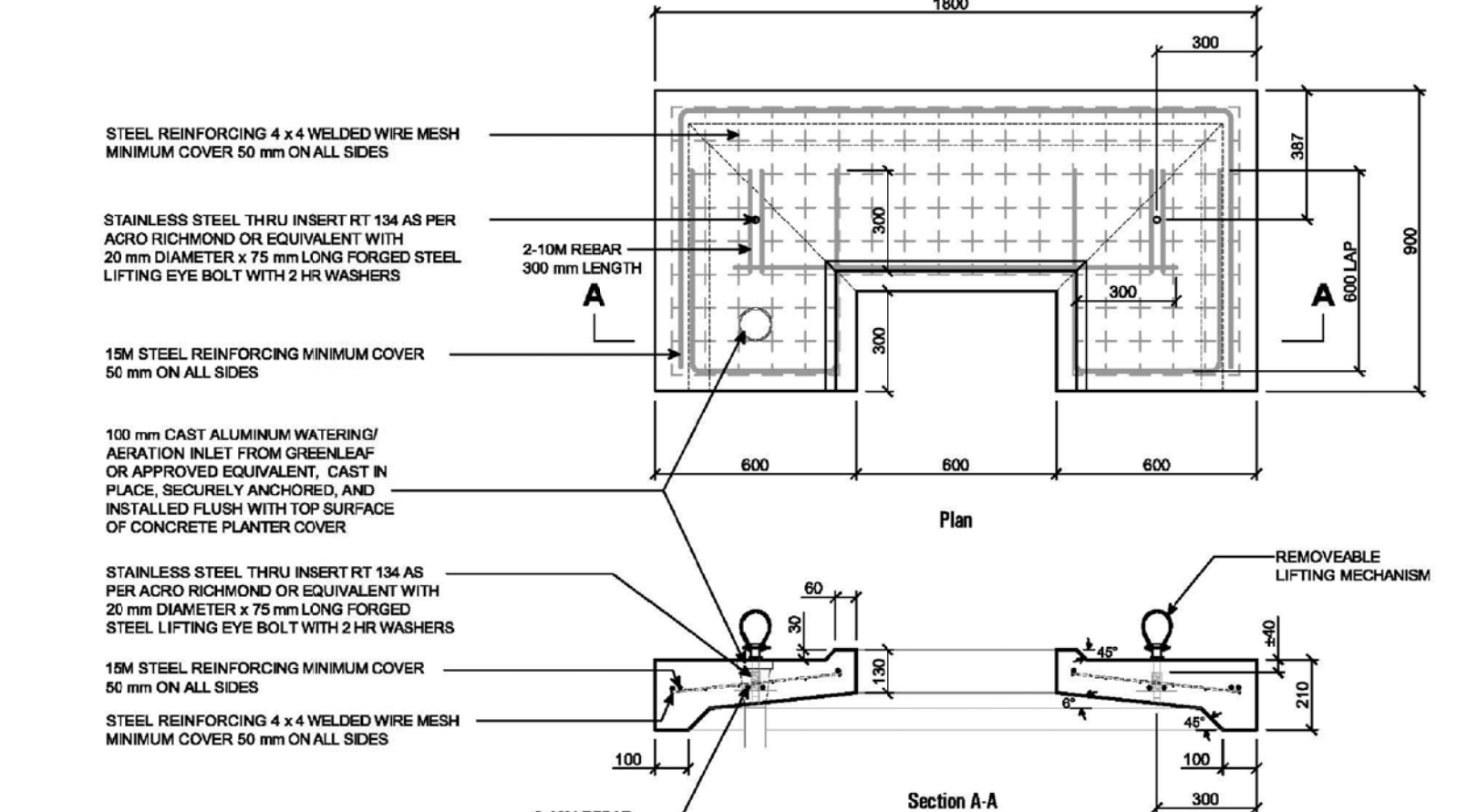
Toronto Urban Design  
 Streetscape Manual  
 Continuous Soil Trench: Precast Concrete Planter Cover and Concrete Sidewalk  
 Section CC  
 T-3A-5  
 NTS  
 02/15

5 PRECAST CONCRETE PLANTER COVER  
 SPL-4 CITY OF TORONTO DETAIL NTS



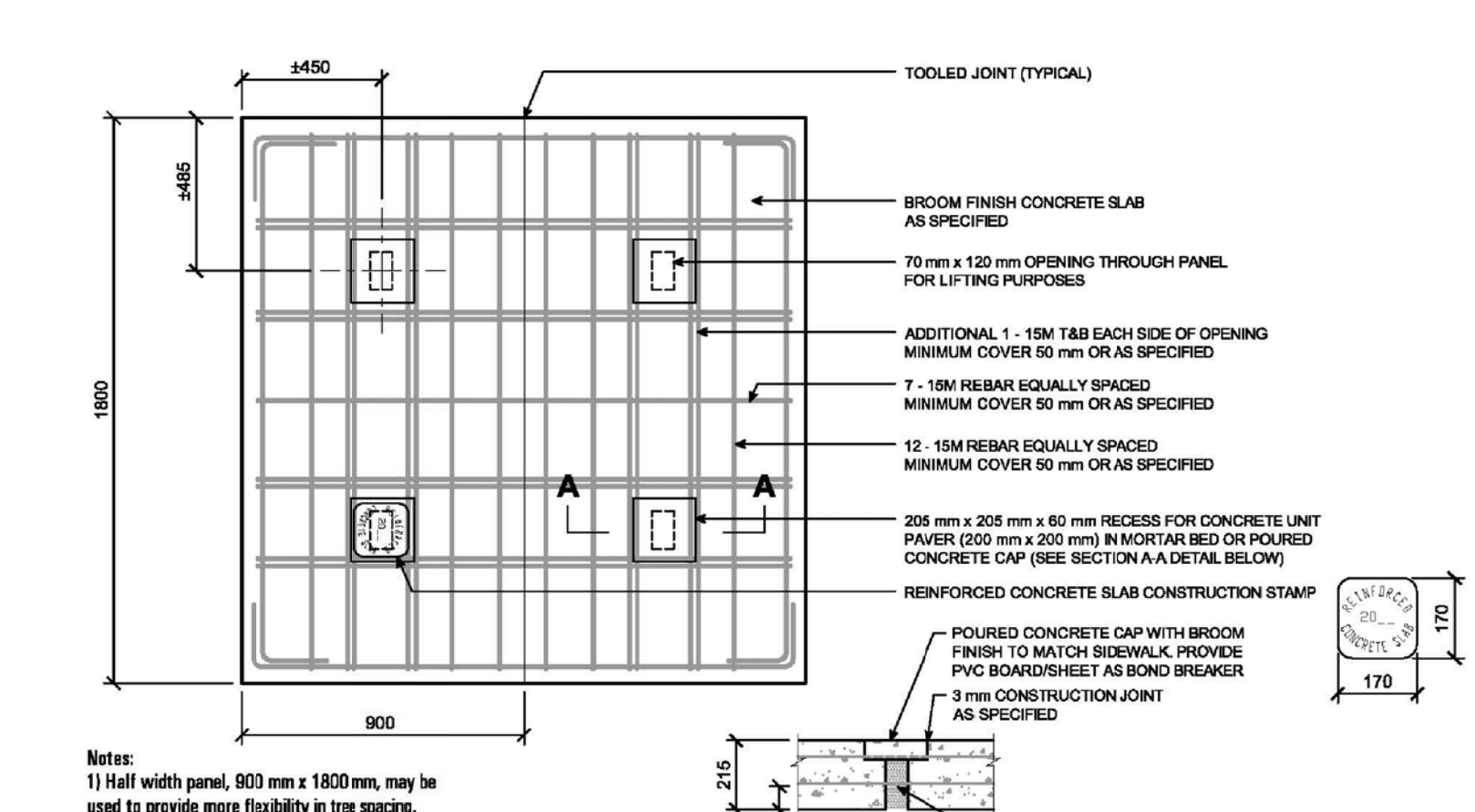
Toronto Urban Design  
 Streetscape Manual  
 Continuous Soil Trench: Precast Concrete Planter Cover and Concrete Sidewalk  
 Precast Concrete Planter Cover Specifications  
 T-3A-6  
 NTS  
 02/15

6 PRECAST CONCRETE PLANTER COVER  
 SPL-4 CITY OF TORONTO DETAIL NTS



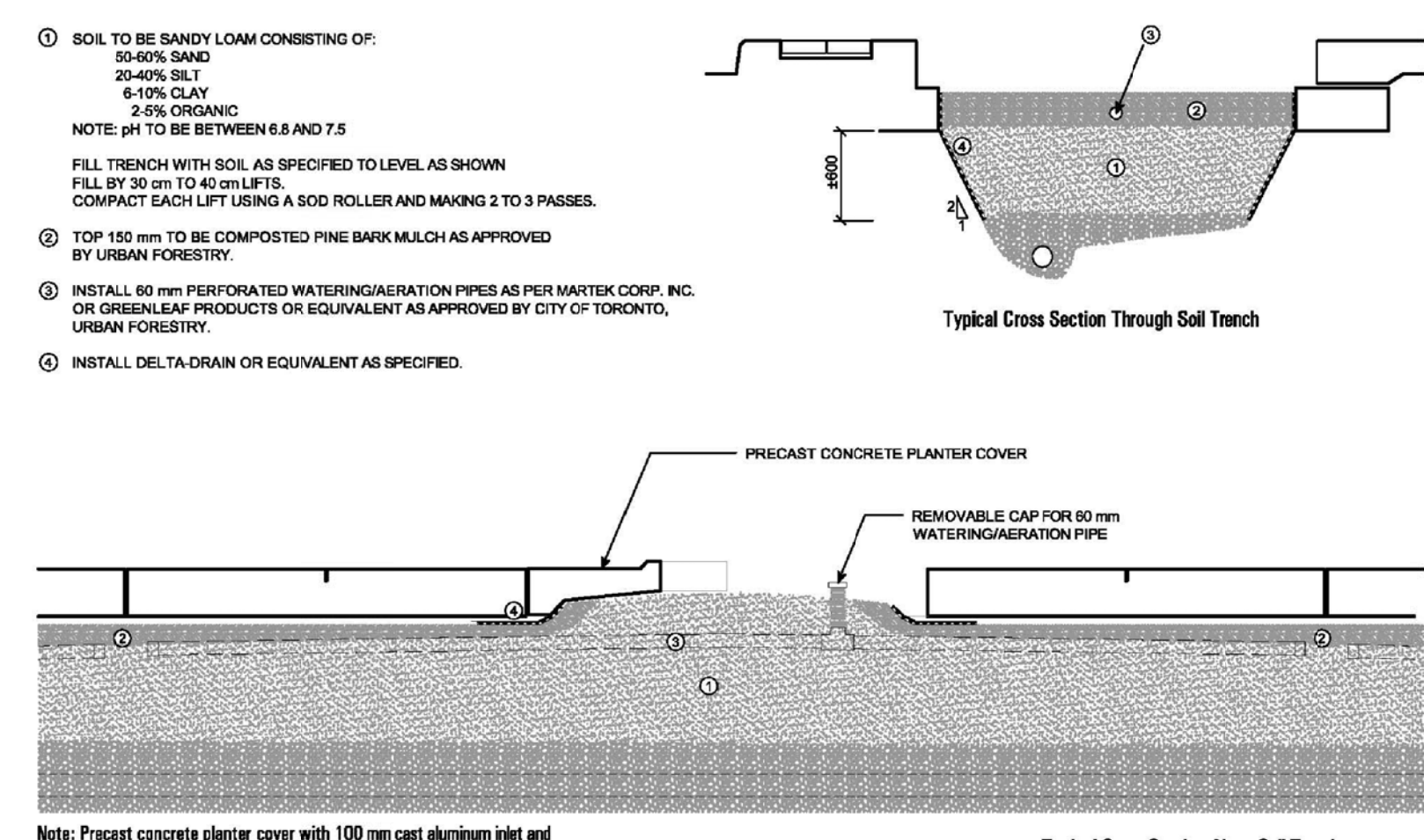
Toronto Urban Design  
 Streetscape Manual  
 Continuous Soil Trench: Precast Concrete Planter Cover and Concrete Sidewalk  
 Precast Concrete Planter Cover Detail  
 T-3A-7  
 NTS  
 02/15

7 PRECAST CONCRETE PLANTER COVER  
 SPL-4 CITY OF TORONTO DETAIL NTS



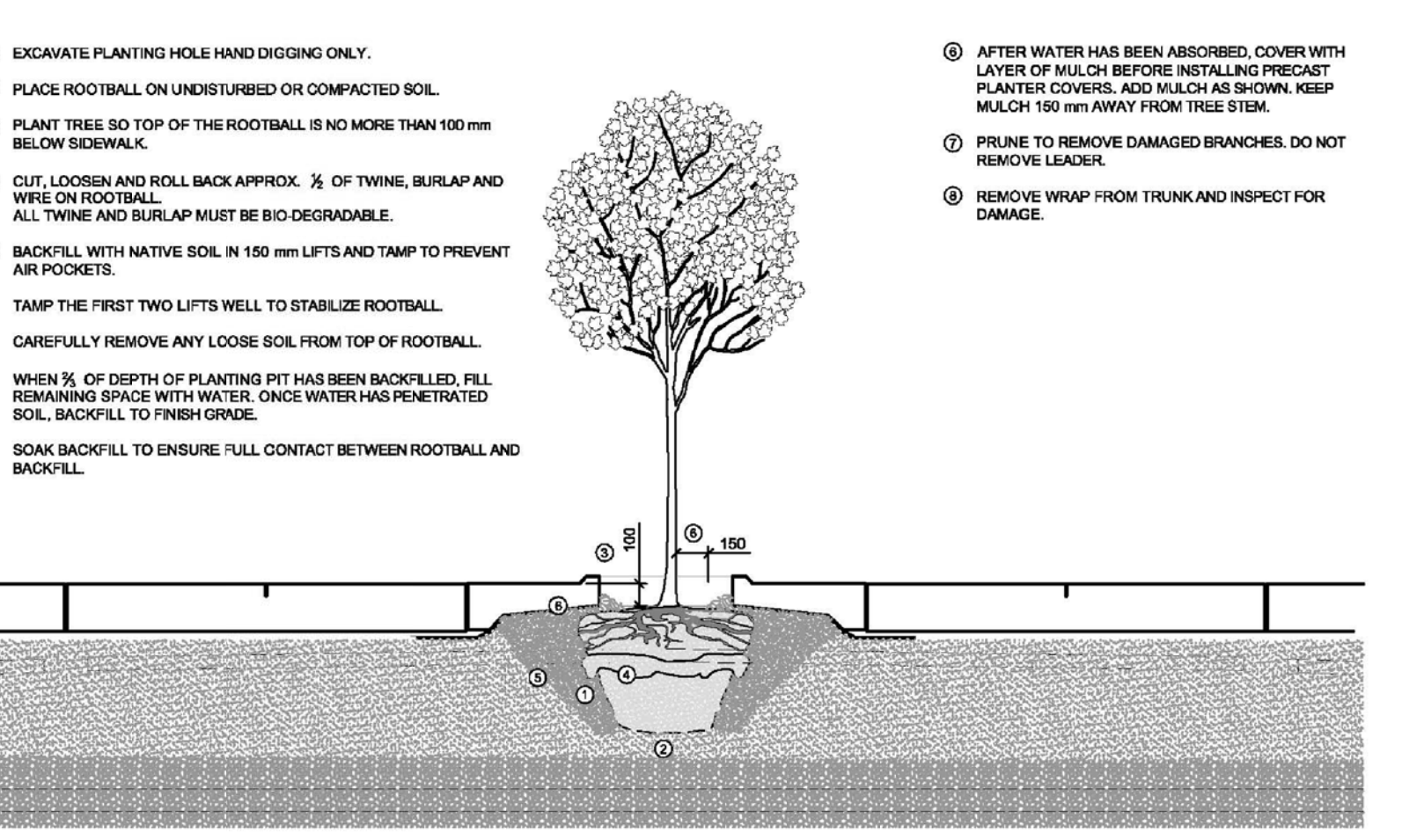
Toronto Urban Design  
 Streetscape Manual  
 Continuous Soil Trench: Precast Concrete Planter Cover and Concrete Sidewalk  
 Reinforced Concrete Trench Cover Detail - Cast-In-Place and Removable  
 T-3A-8  
 NTS  
 02/15

8 PRECAST CONCRETE PLANTER COVER  
 SPL-4 CITY OF TORONTO DETAIL NTS



Toronto Urban Design  
 Streetscape Manual  
 Continuous Soil Trench: Precast Concrete Planter Cover and Concrete Sidewalk  
 Soil Specifications  
 T-3A-9  
 NTS  
 02/15

9 PRECAST CONCRETE PLANTER COVER  
 SPL-4 CITY OF TORONTO DETAIL NTS



Toronto Urban Design  
 Streetscape Manual  
 Continuous Soil Trench: Precast Concrete Planter Cover and Concrete Sidewalk  
 Tree Planting Specifications  
 T-3A-10  
 NTS  
 02/15

10 PRECAST CONCRETE PLANTER COVER  
 SPL-4 CITY OF TORONTO DETAIL NTS

6	Aug. 14/13	Re-issued for SPA
5	Jun. 06/13	Issued for SPA
4	April 03/13	Re-issued for Re-Zoning
3	Jun. 19/12	Re-issued for Re-Zoning
2	Nov. 25/11	Re-issued for Re-Zoning
1	Oct. 17, 11	Issued for Re-Zoning
No./Rev.	Date	Issued

This drawing is to be used for the following purpose: Not to be used for construction unless signed by the landscape architect.

Project: 2376 DUNDAS STREET WEST  
 Location: Toronto, Ontario  
 Prepared for: Dun West Properties Ltd.

Project Architect: E.I. Richmond

Ferris + Associates Inc.  
 Landscape Architecture and Urban Design  
 11 Church Street  
 Suite 302  
 Toronto, Ontario  
 M5E 1Y1  
 Telephone: 416.366.6000  
 Facsimile: 416.364.6008



Drawing Title: DETAILS

Date: \_\_\_\_\_  
 Scale: AS SHOWN  
 Drawn: D  
 Checked: PPF  
 Project No: 0200  
 Drawing No: \_\_\_\_\_

SPL-4