

GENERAL NOTES:

- ARCHITECTURAL INFORMATION PROVIDED BY: E.I. RICHMOND ARCHITECTS LTD.
- STORM WATER DRAWINGS TO BE PROVIDED BY: COLE ENGINEERING
- ALL LANDSCAPE FURNITURE SHOWN IS FOR DESIGN CONCEPT ONLY
- PROPOSED LIGHT LOCATION ON SITE SUBJECT TO PHOTOMETRIC STUDY
- ALL EXISTING MUNICIPAL SIGNAGE TO BE REINSTATED
- TREE LOCATIONS ON PUBLIC PROPERTY SUBJECT TO REVIEW AND APPROVAL BY UNDERGROUND UTILITY COMPANIES.
- ROOT DEFLECTOR TO BE USED WHERE ROOT BALL OF TREES ON PUBLIC PROPERTY ARE WITHIN 1.2m OF UNDERGROUND UTILITIES.

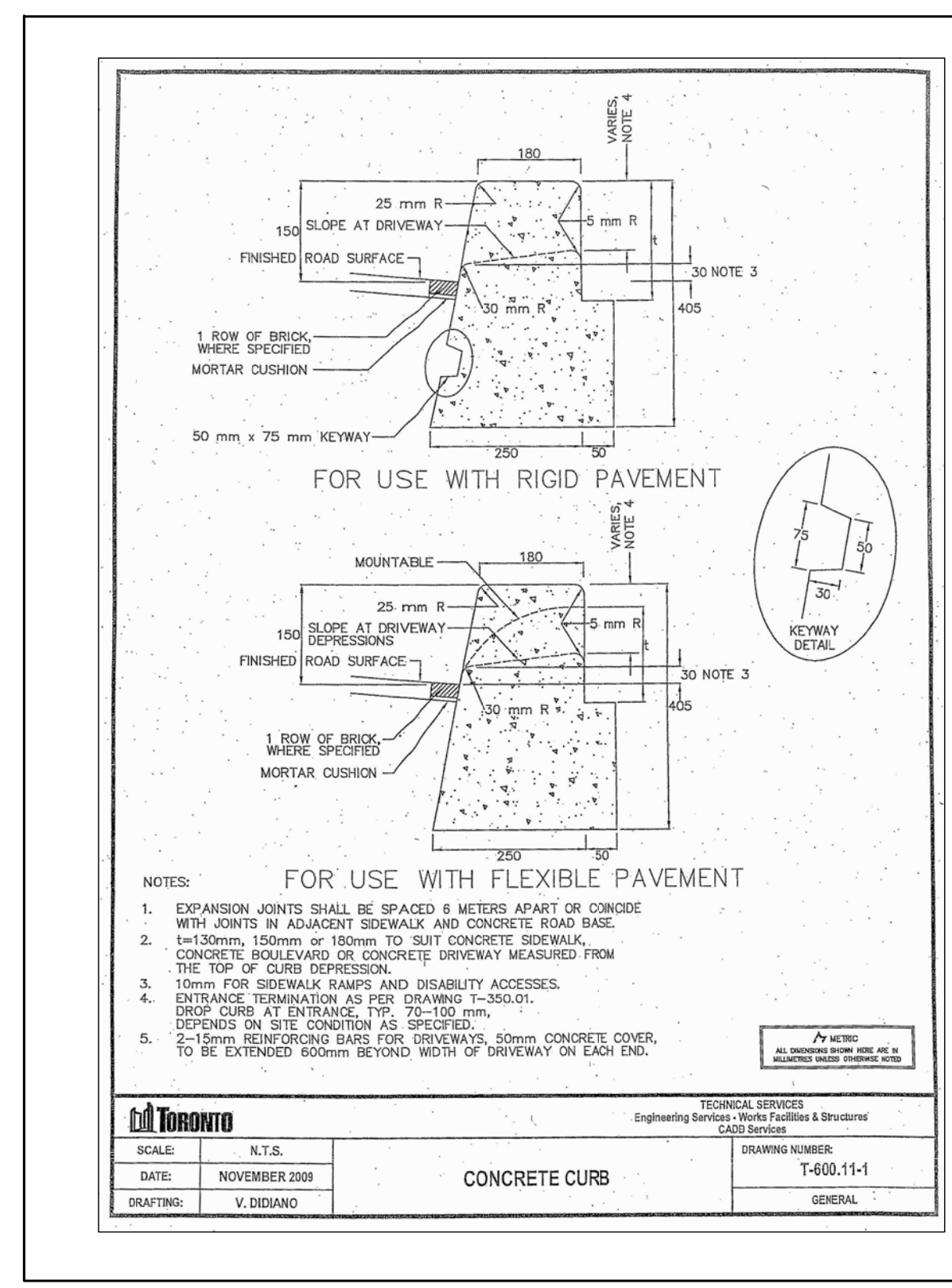
KEY PLAN n.t.s.

NOTES

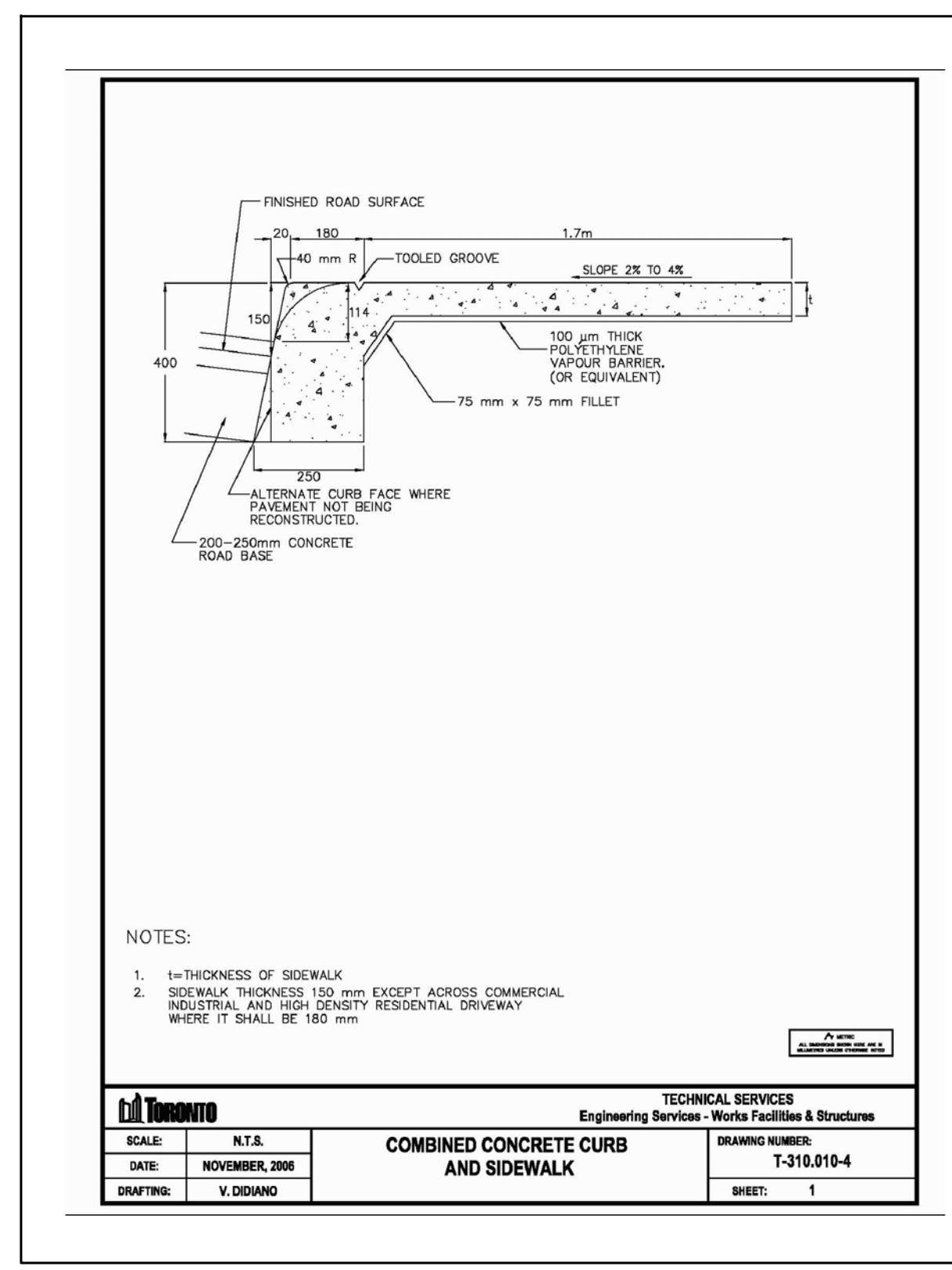
1. Do not scale the drawings.
2. The contractor shall check and verify all dimensions and conditions on the project and immediately report any discrepancies to the consultant before proceeding with the work.
3. The contractor is to be aware of all existing and proposed services and utilities. The contractor shall have all underground services and utility lines staked by each agency having jurisdiction prior to commencing work.

LEGEND

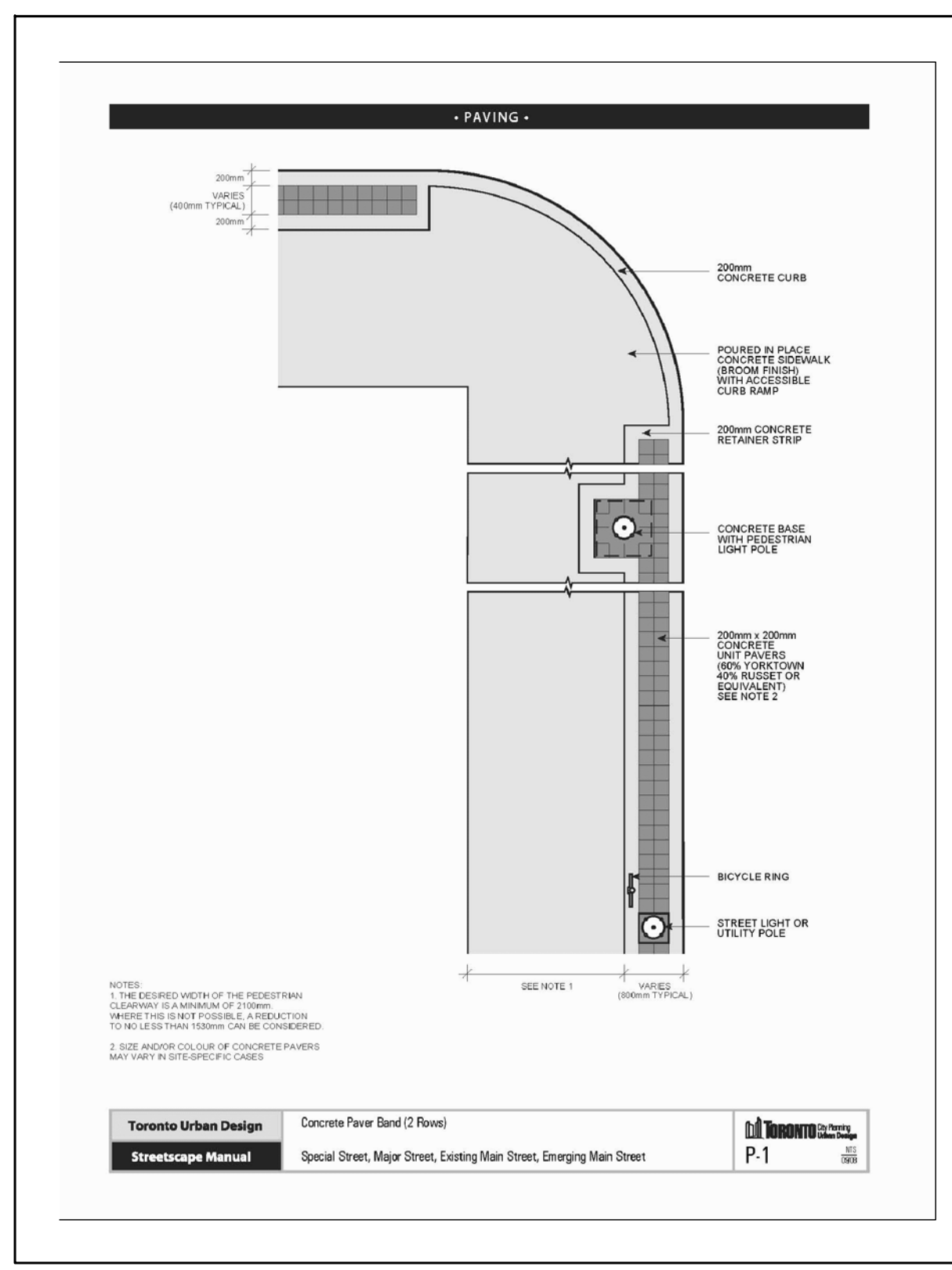
1 HARD LANDSCAPE PLAN 1:200



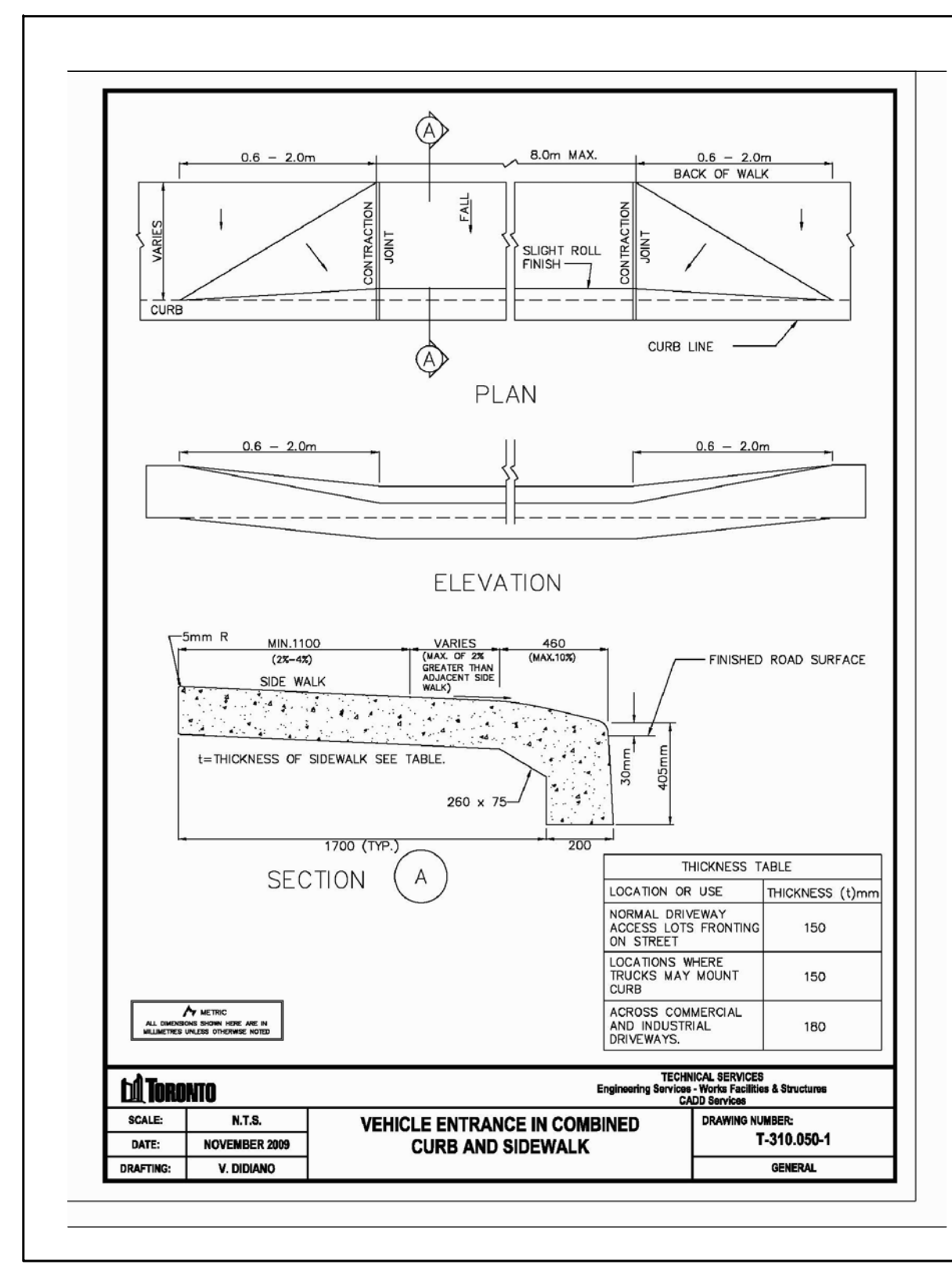
2 CONCRETE CURB NTS
SPL-7 CITY OF TORONTO DETAIL



3 COMBINED CONCRETE CURB+SIDEWALK NTS
SPL-7 CITY OF TORONTO DETAIL



4 CONCRETE PAVERS BAND (TWO ROWS) NTS
SPL-7 CITY OF TORONTO DETAIL



5 VEHICULAR ENTRANCE NTS
SPL-7 CITY OF TORONTO DETAIL

6	Aug. 14/13	Re-issued for SPA
5	Jun. 06/13	Issued for SPA
4	April 03/13	Re-issued for Re-Zoning
3	Jun. 19/12	Re-issued for Re-Zoning
2	Nov. 25/11	Re-issued for Re-Zoning
1	Oct. 17, 11	Issued for Re-Zoning
No [Rev]	Date	Issued

This drawing is to be used for construction unless signed by the landscape architect.

Project: 2376 DUNDAS STREET WEST

Location: Toronto, Ontario

Prepared for: Dun West Properties Ltd.

Project Architect: E.I. Richmond

Ferris + Associates Inc.
Landscape Architecture and Urban Design
11 Church Street
Toronto, Ontario
M5E 1W1
Telephone: 416.366.6800
Facsimile: 416.364.6808

Drawing Title: HARD LANDSCAPE PLAN

Date:

Scale: AS SHOWN

Drawn: DJ

Checked: PPF

Project No: 0200

Drawing No: SPL-1